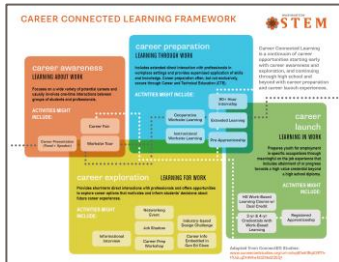
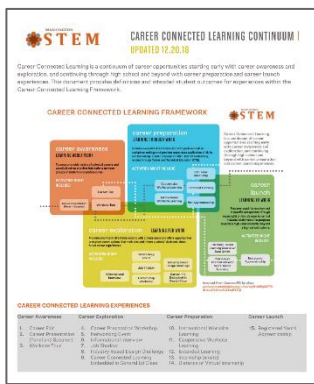


CAREER CONNECTED LEARNING TOOL BOX

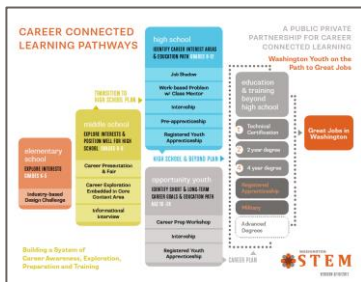
The following resources and studies were developed by Washington STEM in collaboration with STEM Networks, partners, and other stakeholders.



- 1. CAREER CONNECTED LEARNING FRAMEWORK (Updated 2018)**
Graphic depicting awareness, exploration, preparation, and launch experiences that make up Career Connected Learning. Link: <https://tinyurl.com/CCLframework>



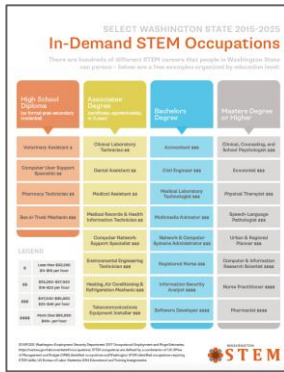
- 2. CAREER CONNECTED LEARNING CONTINUUM (Updated 2018)**
Definitions and intended student outcomes for 14 unique experiences within the Career Connected Learning Framework. Link: <https://tinyurl.com/CCLcontinuum>



- 3. CAREER CONNECTED LEARNING PATHWAYS GRAPHIC (2017)**
A general pathway from a sample of career related experiences in elementary through high school to post-secondary options to great careers in Washington State. Link: <https://tinyurl.com/CCLPathways>

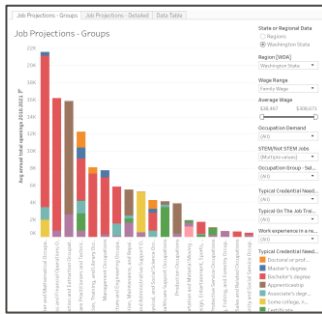


- 4. INDUSTRY-SPECIFIC HIGH SCHOOL TO POST SECONDARY TO CAREER PATHWAYS (2018)**
High school (CTE and general education) courses, certification programs, 2-year degree programs, and 4-year degree programs leading to careers in a specific region and industry such as aerospace in Everett and Healthcare in Seattle. Link: <https://tinyurl.com/industry pathway examples>
Link: <https://tinyurl.com/industry pathway template>



5. HIGH DEMAND OCCUPATIONS BY EDUCATION LEVEL IN WASHINGTON STATE (2018)

A sample of high demand STEM occupations and salary ranges sorted by education level from high school diploma to graduate degrees. <https://tinyurl.com/STEM-occupations>



6. LABOR MARKET AND CREDENTIAL DATA (2018)

What does the current and future high demand career landscape look like in Washington? This dashboard and tools explore high-demand, family-sustaining jobs by region and required credentials. Also included are one-page **Labor Market Data (LMD) Snapshots** depicting a specific regions' job data.

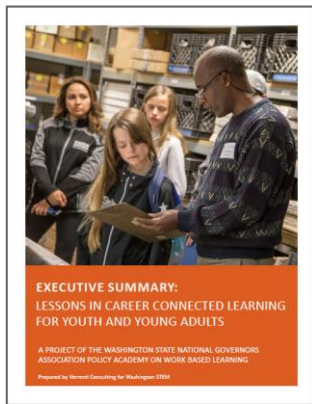
LMCD Quick Start Guide: <https://tinyurl.com/LMCDQuickStartGuide>

LMCD Dashboard:

http://www.washingtonstem.org/focus_area/stembythenumbers/

Best Practices Graphic: <https://tinyurl.com/BestPracticeGraphic>

LMD Snapshots: <https://tinyurl.com/LMDsnapshots>



7. LESSONS IN CAREER CONNECTED LEARNING FOR YOUTH AND YOUNG ADULTS (LEARNING LAB REPORT) (2017)

Lessons learned through a study commissioned by the Governor's Office of 21 career related programs across Washington state.

Link to Executive Summary: <https://tinyurl.com/LearningLabExSum>

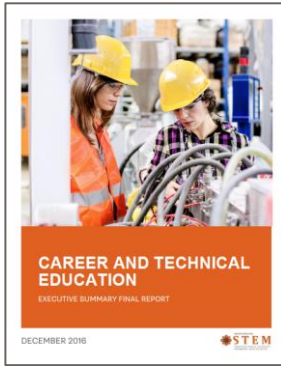
Link to Full Report: <https://tinyurl.com/LearningLabReport>

CRITERIA FOR HIGH-QUALITY CAREER CONNECTED LEARNING		BEST PRACTICE PROGRAMS (N=10)			
		1	2	3	4
GENERAL CRITERIA	1. Program is designed to be career-oriented	9	10	10	10
	2. Program is designed to be industry-relevant	9	10	10	10
	3. Program is designed to be accessible to all students	9	10	10	10
	4. Program is designed to be flexible	9	10	10	10
SUPPORT CRITERIA	5. Program has a strong industry connection	9	10	10	10
	6. Program has a strong industry connection	9	10	10	10
	7. Program has a strong industry connection	9	10	10	10
	8. Program has a strong industry connection	9	10	10	10

8. CRITERIA FOR HIGH QUALITY CAREER CONNECTED LEARNING CHECKLIST (2017)

Nine criteria, indicators, and examples of high quality career connected learning, based on research and field tested among emerging and existing programs in Washington state during the Governor-commissioned Learning Lab project.

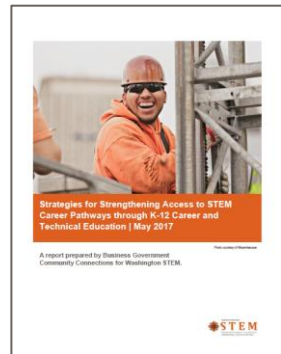
<https://tinyurl.com/CCLcriteria>



9. CTE TO CTC WHITE PAPER REPORT EXECUTIVE SUMMARY (2016)

A baseline understanding of the current CTE system and the need to build strong CTE pathways to high-demand jobs requiring STEM skills. The report uses data gathered from a literature review of CTE, and interviews with national and state policy advocates, CTE staff and administrators, community college representatives, and students involved in CTE programs.

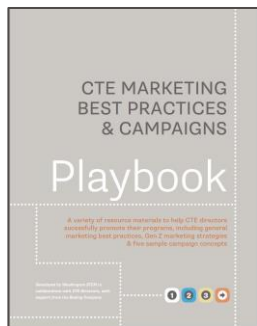
<https://tinyurl.com/CTEwhitepaper>



10. STRATEGIES FOR STRENGTHENING ACCESS TO STEM CAREER PATHWAYS THROUGH K-12 CTE REPORT (2017)

Examines three areas of the K-12 Career Technical Education (CTE) system: Awareness and Communications; Systems Alignment; and Policy and Funding. Interviews were conducted with CTE Directors, college and workforce partners, and external experts to develop a set of recommendations on ways to strengthen STEM career pathways between K-12 and community and technical colleges.

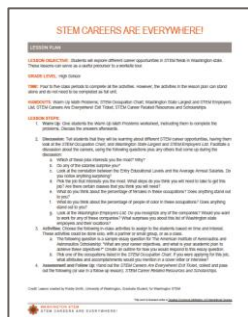
<https://tinyurl.com/CTEReport2>



11. CTE MESSAGING AND MARKETING TOOL KIT (2018)

Research-based marketing campaigns and adaptable templates aimed at getting the word out about CTE programs and their associated pathways to great jobs in Washington.

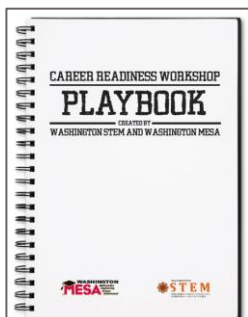
<https://tinyurl.com/CTEPlaybook>



12. STEM CAREERS ARE EVERYWHERE! LESSON PLAN (2017)

High School lesson providing students with an exploration of different STEM career opportunities in Washington state and includes step-by-step teacher instructions, a Warm Up Math exercise, STEM Occupation Chart, Washington State Largest and STEM Employers List, Exit Ticket; and STEM Career Related Resources and Scholarships.

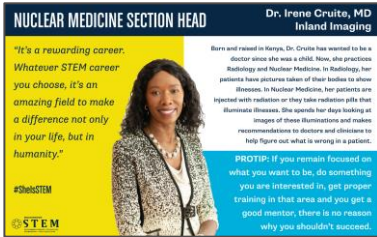
<https://tinyurl.com/STEMCareersLessonPlan>



13. WASHINGTON STEM & WASHINGTON MESA CAREER READINESS PLAYBOOK (2016)

Step-by-step guide for how to hold a successful Career Readiness Workshop targeting middle and high school students, as well as post-secondary students seeking STEM internships and employment. Included are example materials from an event hosted by Washington State MESA as well as templates and presentations for creating your own successful Career Readiness Workshop.

<https://tinyurl.com/CRPlaybook>



14. NOTABLE WOMEN IN STEM PROFILES (2018)

A sample of amazing women doing amazing things in the world of STEM.

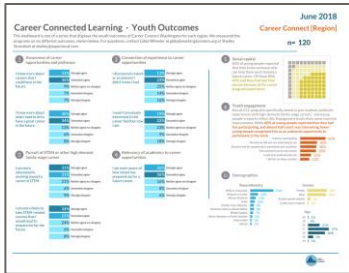
www.washingtonstem.org/notable-women-in-stem/



15. ENGINEERING FELLOWS PLAYBOOK (2017)

A guide for implementing the Engineering Fellows Program—beyond the design challenges and teaching plans that are developed by teams of teachers, college engineering students, and professional engineers.

<https://tinyurl.com/EFPlaybook>



16. CAREER CONNECTED LEARNING YOUTH OUTCOMES SURVEY (2018)

The purpose of this survey is to gather data on short-term outcomes for young people who have participated in Career Connected Learning experiences. Register at the link provided to learn more and gain access to the survey. Programs that administer the survey will receive a data summary of youth outcomes related to their program.

<https://tinyurl.com/CCLSurveyReg>

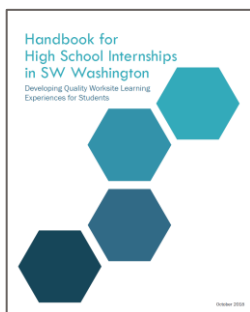
The following curated resources were developed by other organizations (i.e. not developed by Washington STEM) and represent a few exemplary products.



1. EMPLOYER'S WORKSITE TOUR TOOLKIT (2017)

Developed by the Community Center for Education Results (CCER), this is a step-by-step manual for employers to plan a highly effective worksite tour filled with examples of best practice.

<https://tinyurl.com/DiscoverUToolkit>



2. HANDBOOK FOR HIGH SCHOOL INTERNSHIPS IN SW WASHINGTON (2018)

Developed by the Southwest Washington STEM Network, this comprehensive resource can be used as a resource in identifying the type of internship model that best fits the school and business, as a toolbox to fill in holes within already established programs, or as an instrument to aid discussion between the school and the business.

[Google Folder with Full Internship Binder](#)