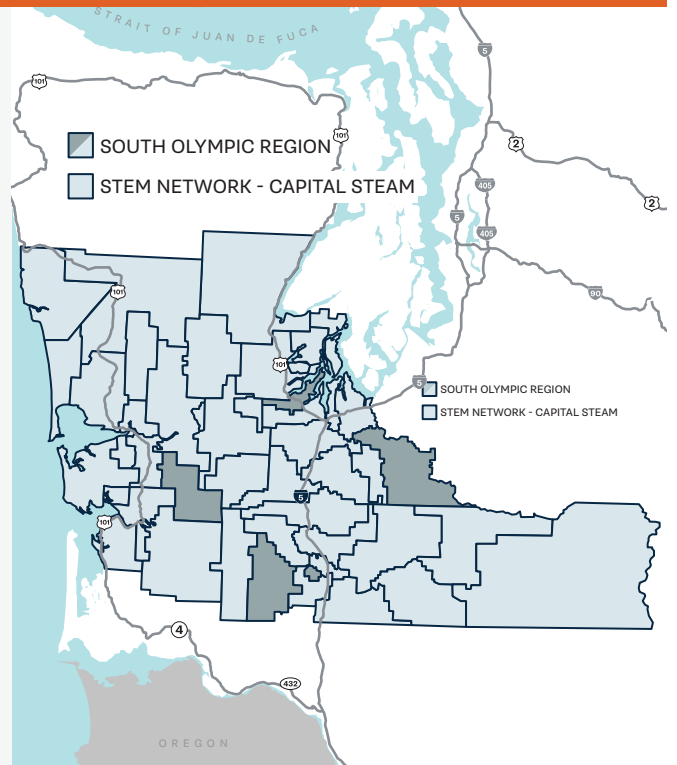


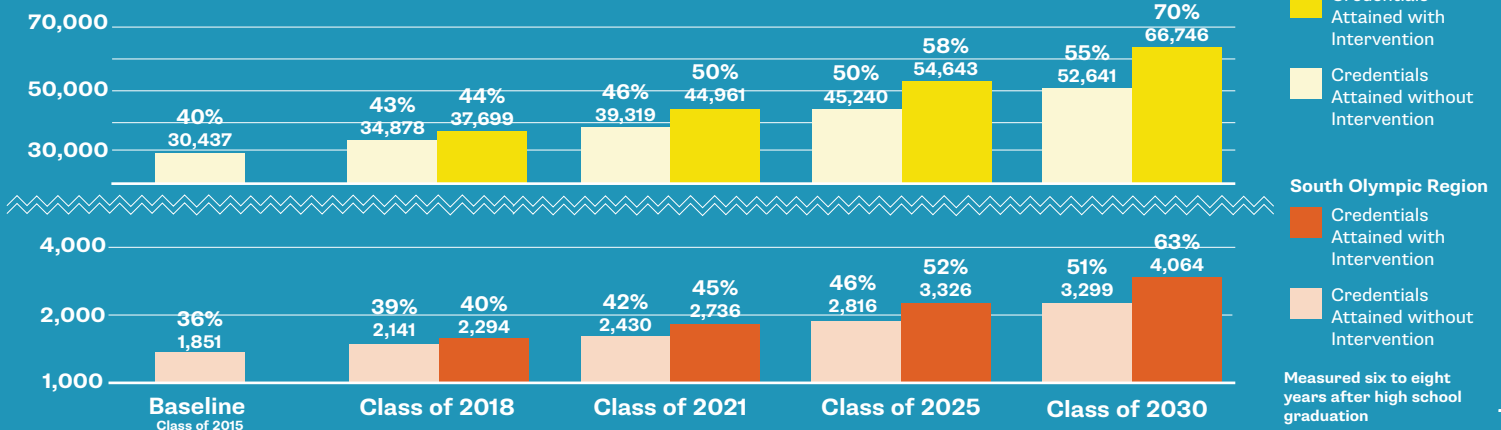


# STEM BY THE NUMBERS: SOUTH OLYMPIC REGION

The South Olympic Region is home to growing healthcare, wood products, education, and construction industries, spanning from Olympia to Westport. The region is made up of 44 school districts, 39 of which are members of the Capital STEAM Network. The Network's business, education, and community partners are working to close credential attainment gaps, especially for students of color and students from low-income families. They aim to increase the number of local students who become teachers, construction apprentices, and wood products sector and healthcare professionals, which have 2,001 annual projected openings combined over the next five years.

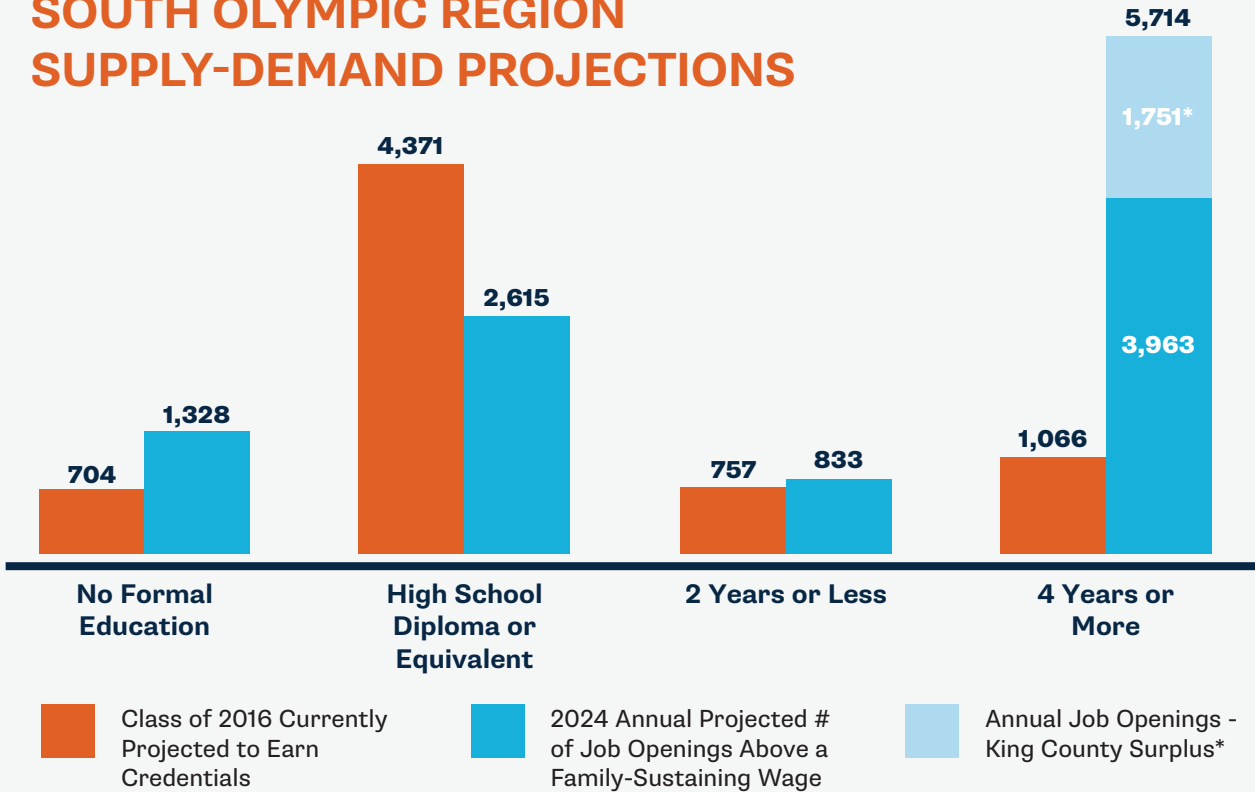


## 148 MORE CREDENTIALS PER YEAR = REGION ON TRACK



# THE OPPORTUNITY: A STRONG DEMAND FOR STEM TALENT

## SOUTH OLYMPIC REGION SUPPLY-DEMAND PROJECTIONS



By supporting more students to be on track to earn a high-demand credential, the South Olympic Region will ensure that up to 8,739 available family-sustaining jobs (those that pay a regionalized wage of \$34,100 or more a year) could be filled by local young adults.

\*Over the next 12 years, there will be a surplus of jobs in King County compared to the number of new, local, credentialed individuals in King County. That means that if other regions throughout the state only attended to their own regional job openings, King County would be sorely under-supplied by Washington state-originating kids. This surplus represents a proportion of the surplus jobs that could be supplied by students from the South Olympic Region.

Photo: Bill Wagner, The Daily News



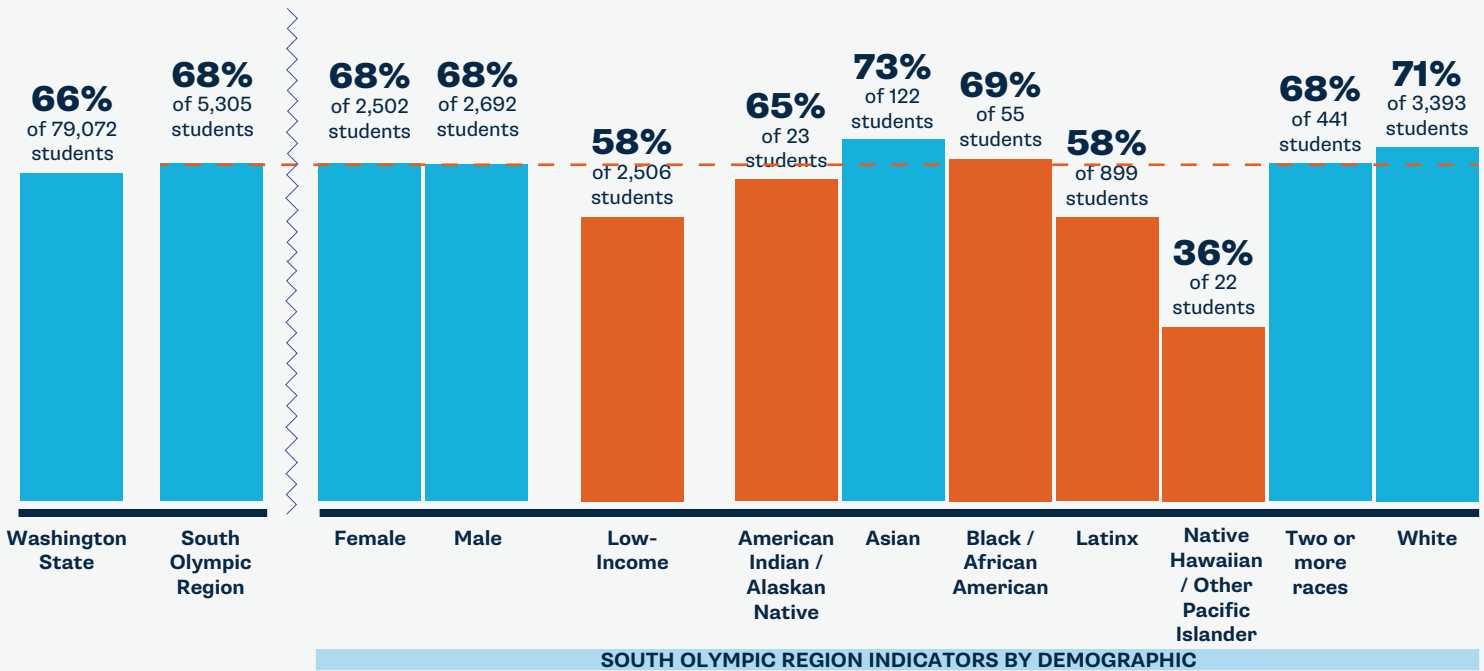
## OPPORTUNITIES IN WOOD PRODUCTS SECTOR

With an annual total employment of over 5,500 in the region, the wood products sector offers family-wage jobs in forestry and logging support, wood window and door manufacturing, and paper manufacturing. In Kalama, high school science teacher Chris Stone teaches a Natural Resources class using an Advanced Forestry Framework. He developed the dual-credit course in partnership with the Pacific Education Institute (PEI) and Pacific Mountain Workforce Development Council to help students gain forest management skills. Advances in manufacturing, such as the development of cross-laminated timber and other mass timber products, should result in a rapid growth and demand for wood products.

# SOUTH OLYMPIC REGION K-12 STEM INDICATORS BY DEMOGRAPHIC

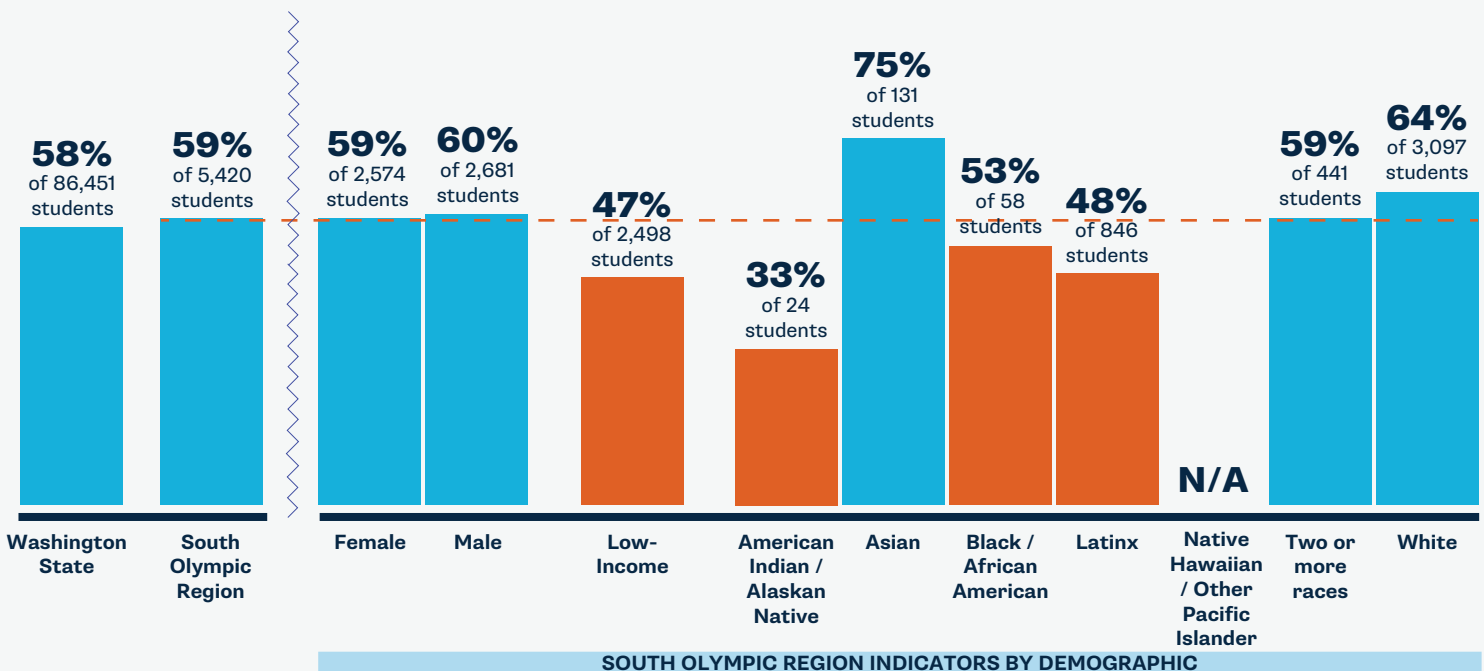
## KINDERGARTEN MATH READY (2018)

68% of 5,305 South Olympic Region children entering kindergarten are math ready compared to 66% of 79,072 children statewide.



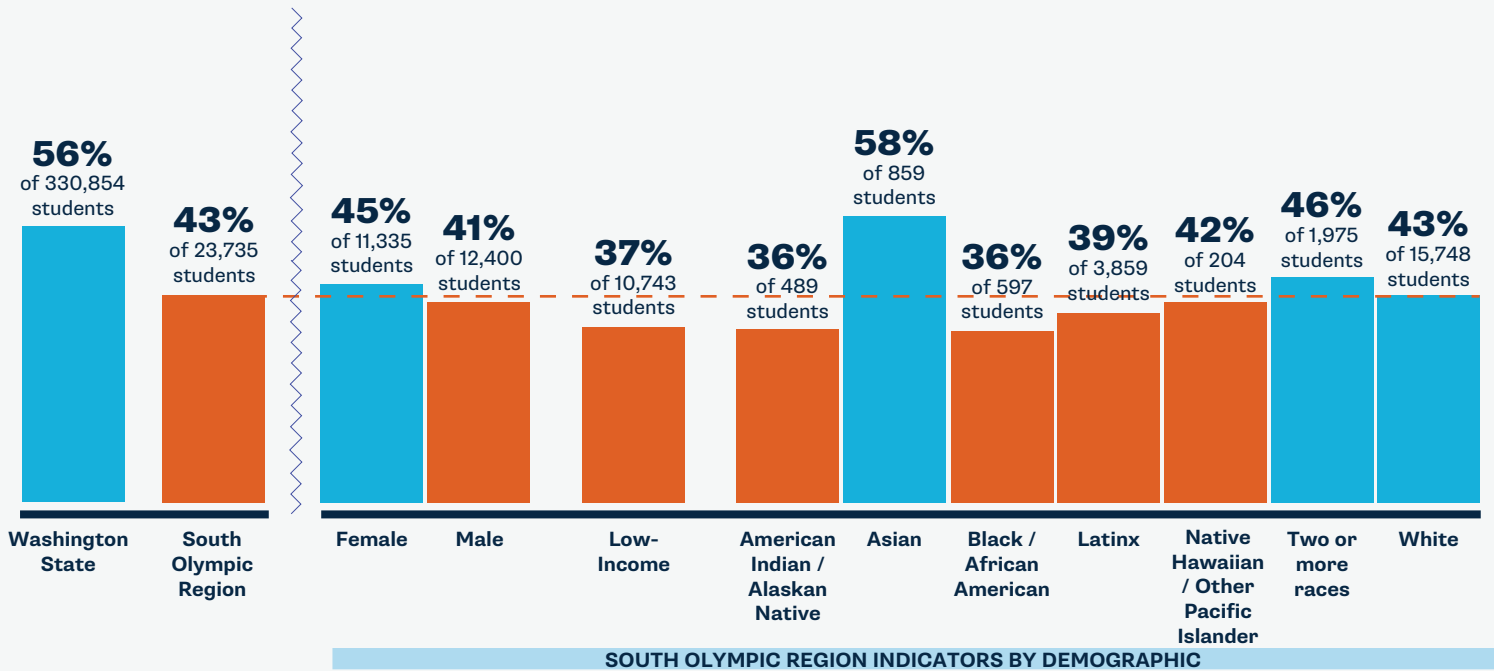
## 3RD GRADE MATH (2017)

59% of 5,420 of South Olympic Region third graders meet grade level math standards compared to 58% of 86,451 third graders statewide.



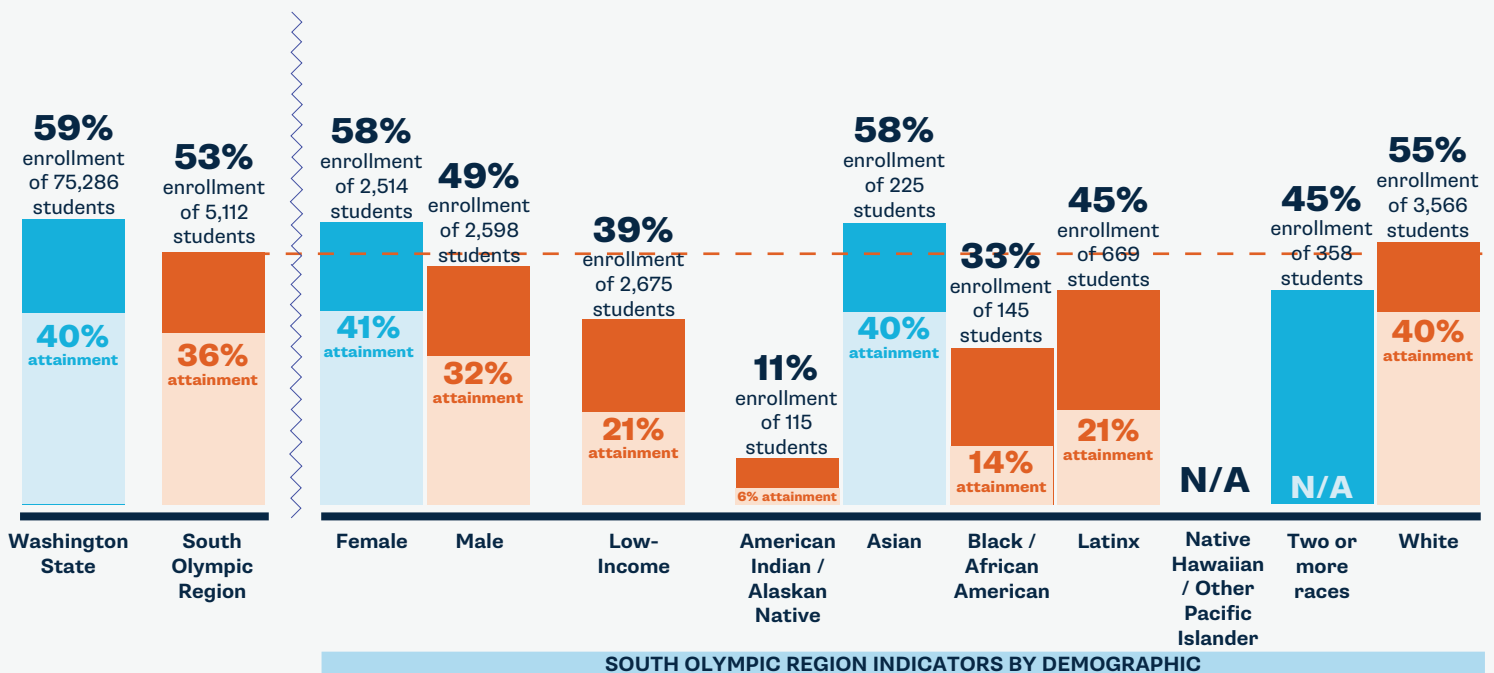
## DUAL CREDIT (2017 9-12TH GRADERS)

43% of 23,735 South Olympic Region high schoolers complete at least one dual credit course compared to 56% of 330,854 youth statewide.



## CREDENTIAL ENROLLMENT/ATTAINMENT

53% of 5,112 of the originating ninth graders in the South Olympic Region enroll in a postsecondary program and 36% of those originating ninth graders earn a credential by age 26.



Data citations and region-by-region analyses will be posted at [www.washingtonstem.org/STEMbythenumbers](http://www.washingtonstem.org/STEMbythenumbers).

For more information on the Capital STEAM Network and its work in the South Olympic Region, contact Network Director Lorie Thompson at [lthompson@esd113.org](mailto:lthompson@esd113.org).

# SOUTH OLYMPIC REGION STEM INDICATORS

## Ready for Kindergarten

While 68 percent of all South Olympic Region kids are math ready by kindergarten, high-quality early learning opportunities need to be more accessible to families of color and those that are lower-income to close math-readiness gaps.

**TBD** we are determining availability of high-quality early learning for families and supports for professionals in this region

**68%** of South Olympic Region children entering kindergarten are math ready

## K-8 STEM Learning

Between kindergarten and third grade, math-readiness and skills gaps widen for many students, which is correlated with success in related areas of study. School districts need resources and assistance to remove barriers and create opportunities in STEM for all students.

**TBD** we are determining the STEM indicators for each school district in this region in partnership with LASER

**59%** of South Olympic Region third graders meet grade level math standards

## Secondary Pathways

While students in the South Olympic Region are overall less likely to complete dual credit\*\* courses than their peers across the state, students of color and low-income students experience reduced access to and completion of these courses compared to their peers.

**TBD** we are determining availability of dual credit courses and career pathways programs by type and subject area in this region

**43%** of South Olympic Region high schoolers complete at least one dual credit course

\*\*Dual credit programs give students the opportunity to earn high school and college credit simultaneously. Completion of dual credit coursework is highly correlated with higher education enrollment and completion.

## Credential Enrollment/Attainment

Of the originating ninth graders across the state, 59 percent enroll and 40 percent complete a credential. While South Olympic Region students enroll and complete at comparable rates, the region is working to expand credential pathways capacity to close opportunity gaps for key student groups.

**TBD** we are determining local higher education and career training program capacity in this region

**53%** of the originating ninth graders in the South Olympic Region enroll in a postsecondary program and 36 percent of those originating ninth graders earn a credential by age 26.



STEM by the Numbers is a series of regional reports which examines data that tells us about Washington students' access to credentials and family-sustaining jobs. Together with our partners, we are advocating for and developing regionalized, cross-sector, and longitudinal data. We highlight student outcomes above, and in future publications we will report on systems indicators, like high school course offerings and availability of STEM professional learning and supports.

Data citations and region-by-region analyses will be posted at [www.washingtonstem.org/STEMbythenumbers](http://www.washingtonstem.org/STEMbythenumbers).

For more information on the Capital STEAM Network and its work in the South Olympic Region, contact Network Director Lorie Thompson at [lthompson@esd113.org](mailto:lthompson@esd113.org).

# REGIONAL TOP INDUSTRIES AND STEM JOBS

## MEDICAL ASSISTANTS & NURSES

Annual # of Openings: 651

Credential: Certificate → Bachelor's

Average Regional Wage: \$49,369 → \$78,044

## WOOD PRODUCTS SECTOR PROFESSIONALS

Annual # of Openings: 262

Credential: High School Diploma → Apprenticeship

Average Regional Wage: \$40,000 → \$62,000

## CONSTRUCTION & TRADES PROFESSIONALS

Annual # of Openings: 599

Credential: Apprenticeship

Average Regional Wage: \$53,990

## K-12 TEACHERS

Annual # of Openings: 489

Credential: Bachelor's

Average Regional Wage: \$61,719

## BIG BROTHERS BIG SISTERS LOVES STEAM!

Last year, our youth in South Pacific County put on a STEAM fair where they demonstrated the projects they had worked so hard on over the past few months. Hailey and Taylor showed off their “elephant toothpaste” experiment, Mya and Alex showed a beautiful art piece made out of recycled materials, and Lindsey and Mason demonstrated the robotic car they were building. These STEAM projects gave both our Bigs and Littles different ways to connect with each other and bond over a shared interest. Seeing other people admire the work they had put so much time and effort into boosted their confidence and allowed them to take pride in their work. Since STEAM is so broad, each match was able to really connect with a specific aspect and shine in their respective areas. Our rural youth don't often get a chance to do STEAM activities, and seeing their confidence grow in these areas was absolutely fantastic!



By 2030, Washington STEM and our statewide partners aim to **triple the number of students** of color, students from low-income and rural families, and young women who are on track to earn high-demand credentials and enter family-sustaining careers in the state.